



DOUBLE L
GROUP LLC



BROILER TIMES

Volume 25

Bringing you proven and tested
products since 1973

www.doublel.com

MEET OUR TEAM



Elizabeth Beeler
Vice President Sales
ebeeler@doublel.com



Garrett Bradford
Poultry Sales Manager
gbradford@doublel.com

Since 1973, Double L Group has committed to providing high-quality products and services worldwide that are based on value, customer needs, and excellent sales support. Our team of dedicated professionals are ready to help you choose the right products and answer any questions about installation. Contact us today!



DOUBLE L
GROUP LLC

INDEX

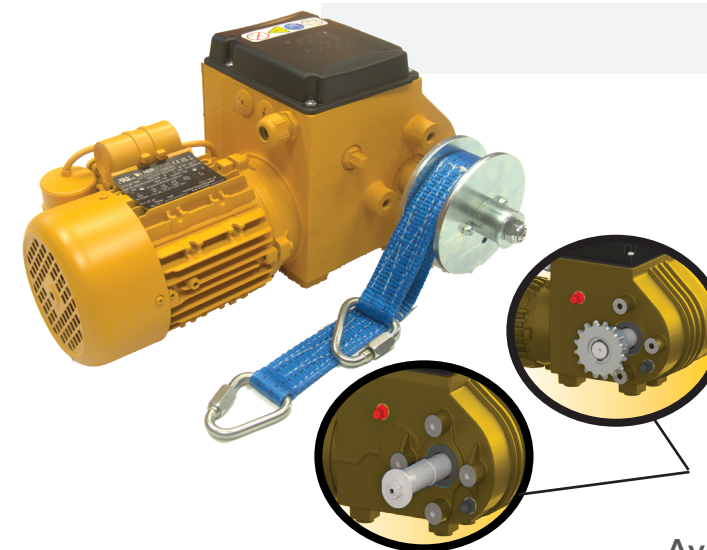
Meet Our Team 2
 Winch Systems 3
 Stir Fans 4-5
 Exhaust Fans 6-7
 Evaporative Cooling 8-9
 Tunnel Door 10
 Wall Inlets 11-17
 Recessed Vs. Galvanized 18
 Wind/Sun Deflector 19
 Ceiling Inlets 20-23
 Flooring 24-25
 Window and Cover 26
 Accessories 27
 About Us 28



ECODRIVE WINCH SYSTEMS

Delivering Optimal Power for Ventilation Systems

- Flexible installation
- Multiple inlets can be controlled at the same time
- Low-maintenance and low-noise
- Perfect Price/Performance Ratio
- Compact and Smart Design
- Includes emergency limits



EcoDrive 300

Available in Belt Drive or Pipe Drive.
Contact for Part Number.

Torque	300 Nm
Belt Speed	28 in./min.
Pulls	1 Belt = 809 lbs/belt 2 Belts = 1050 lbs/belt or 2100 total
Voltage:	0.35 HP 120V 1 Phase 60hz 0.35 HP 240V 1 Phase 60hz 0.35 HP 240V 3 Phase 60hz 0.35 HP 480V 3 Phase 60hz

Available for Pipe or Belt Drive Applications

EcoDrive 90

Part 17002

Torque	90 Nm
Belt Speed	6 in./min.
Pulls	1 Belt = 750 lbs/belt 2 Belts = 386 lbs/belt or 772 total
Voltage	24 DC





DIRECTAIRE PLUS STIR FANS

- Up 15% more CFM compared to the original DirectAire
- New rotor motor technology allowing the motor to run cooler
- Brushless motor allows for smoother operation
- IP54 motor rating
- Powder coated, steel blades
- Two speed rotor motor
- Included Mounting Bracket
- 3-Year Warranty



18" Stir Fan

Part 90718
24" diameter x 4.8"
BESS Labs Test c22275

20" Stir Fan

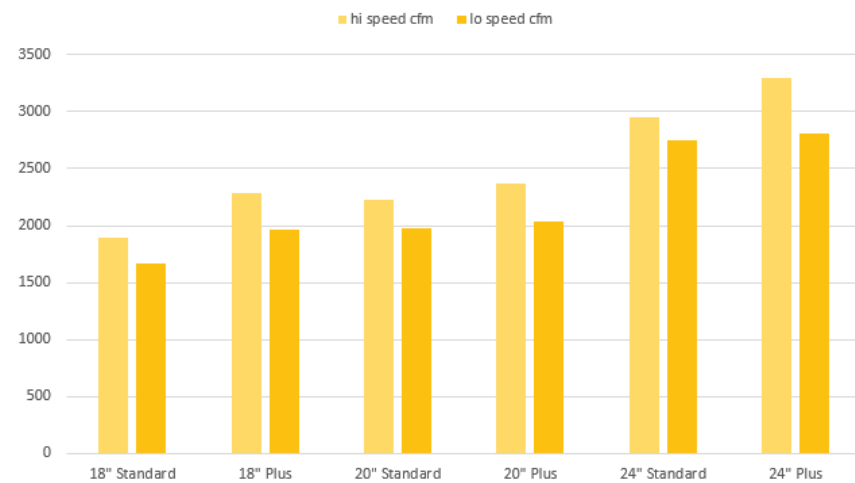
Part 90720
25.6" diameter x 5.1"
BESS Labs Test c22274

24" Stir Fan

Part 90724
30" diameter x 5.6"
BESS Labs Test c22273

BLADE DIAMETER	HP	VOLTS	AMPS	HZ	SPEED	LOW CFM	HIGH CFM	PHASE
18"	1/5	120	1.3	60	2	1970	2280	1
20"	1/5	120	1.3	60	2	2040	2379	1
24"	1/5	120	1.4	60	2	2810	3300	1

DirectAire Standard vs. DirectAire Plus Stir Fans



DIRECTAIRE STIR FANS

Steel bearings and 1/5 HP sealed motor for years of long life

- Mixes Cold Floor Air with Hot Ceiling Air
- Less Heater Cycles
- Widespread Grill Guard
- Included Mounting Bracket
- 2-speed circulation fan - high and low settings
- Extra Amps to spare
- Excellent Thrust CFM
- 3-Year Warranty
- UL LISTED AND UL LISTED TO CANADIAN SAFETY STANDARDS



18" Stir Fan

Part 90618
21" diameter x 7.25"
BESS Labs Test c22270

20" Stir Fan

Part 90614
22.8" diameter x 7.3"
BESS Labs Test c22271

24" Stir Fan

Part 90600
29" diameter x 9"
BESS Labs Test c22272

BLADE DIAMETER	HP	VOLTS	AMPS	HZ	SPEED	LOW CFM	HIGH CFM	PHASE
18"	1/5	120	0.94	60	2	1670	1890	1
20"	1/5	120	1.07	60	2	1980	2230	1
24"	1/5	120	1.2	60	2	2750	2950	1

"Used the stir fans in my houses and really helped even out the temperature distribution in winter to save gas. Have had these three years and they're still working great!"

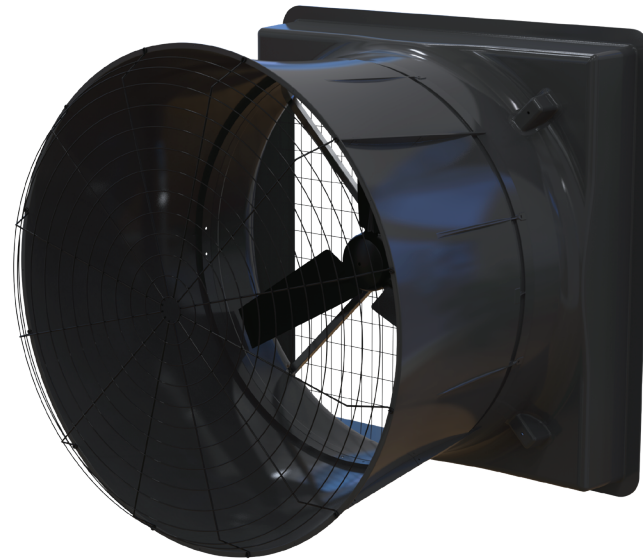




**NEW
PRODUCT**

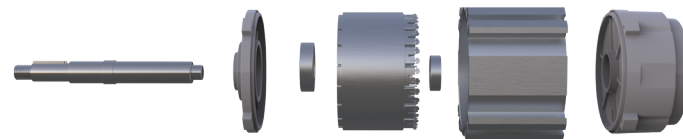
DIRECT X EXHAUST FAN

DRX36, DRX48, DRX57



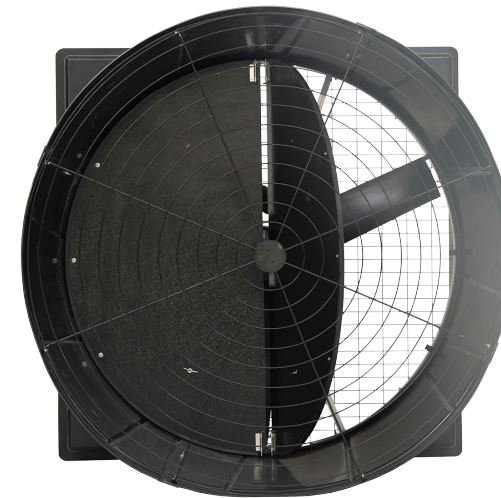
DIRECT X FEATURES

- Brushless Magnet EC Motor
- Fiberglass Reinforced SMC Shell
- Incorporated Butterfly Door
- Variable Speed/Soft Start
- Robust Direct-Drive Structure



DIRECT X BENEFITS

- Delivers exceptional performance: air volume, efficiency, and superior corrosion resistance.
- Robust housing slides mount through the wall, with a cone design that's no wider than the housing, allowing for closer spacing than traditional fans.
- Variable Speed Motor offers a wide operating range, superb Air Flow Ratio, and excellent efficiency, with no maintenance required for belts, pulleys, or tensioners.
- Durable Shutter has 8 years of industry performance and provide a superior seal while improving air volume. Doors fall back in place without a spring due to their unique angled installation.
- Direct drive fan with soft start allows for longer life on the motor and less wear on the components.

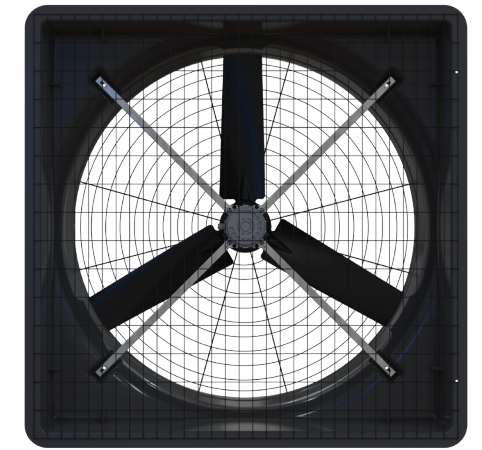


36"

Butterfly Door Part DRX362BB

14,080 CFM .05 SP
11,410 CFM .20 SP

BESS Labs Test
#24338



48"

Ecotight Shutter Part DRX482WS

22,800 CFM .05 SP
18,700 CFM .20 SP

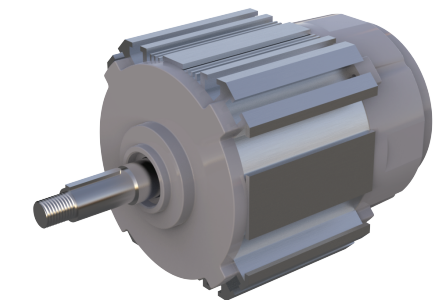
BESS Labs Test
#24339

57"

Butterfly Door Part DRX572BB

34,100 CFM .05 SP
29,200 CFM .20 SP

BESS Labs Test
#24334



EC MOTOR

NEW
PRODUCT

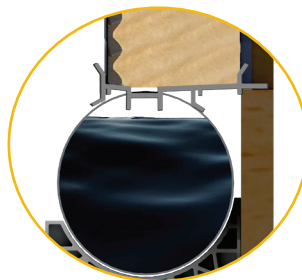
DIRECTAIRE COOL CELL SYSTEM

The DirectAire Cool Cell system is our corrosion resistant system for cooling to provide longevity, efficiency, and easy maintenance for the grower to utilize in their house.

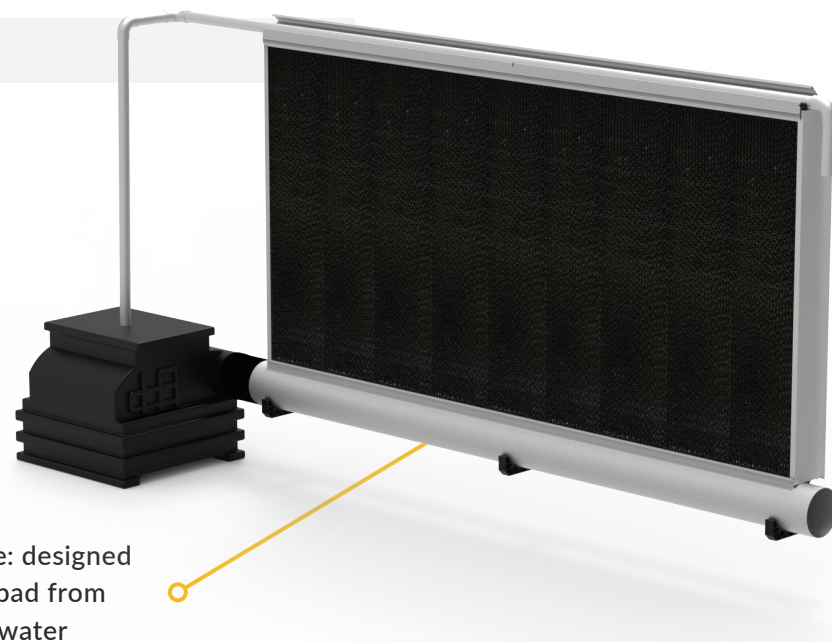
DirectAire Cool Cell

Part 31150

Internal Water Capacity: 2.6 gal per ft.
12" tank capacity: 23.5 gal
Pad Thickness: 6"
Pad Height: Size varies between 36"-72"



Extend pad life: designed to keep the pad from sitting in water

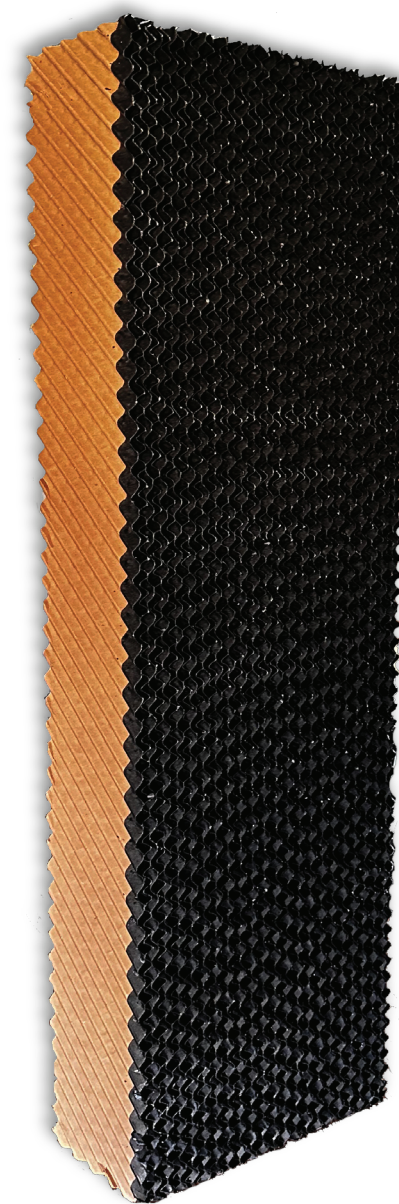


- Unique trough design allows 20% increase in water capacity than other systems
- Durable, UV resistant, plastic design that is corrosion resistant
- Open-top design allows for visual inspection of water jets and easy access for cleaning
- Features less components for quick and easy installation
- Multiple layouts to fit your specific needs

NEW
PRODUCT

EVAPORATIVE COOLING PADS

The DirectAire Cooling pad is a meticulously crafted cooling solution with its efficiency and durability. Tailored for livestock facilities, its design ensures optimal cooling, promising years of dependable service.



DirectAire Cooling Pad

Part 31163

Dimension: 36" H x 12" W x 6" D

Part 31164

Dimension: 48" H x 12" W x 6" D

Part 31160

Dimension: 60" H x 12" W x 6" D

Part 31161

Dimension: 72" H x 12" W x 6" D

Part 31162

Dimension: 84" H x 12" W x 6" D

- Unique structure provides a larger evaporation surface aiding in an outstanding cooling efficiency
- High face velocity enables air to pass through the pad without water droplet carryover
- Specially treated for corrosion resistance, mildew resistance and high structural strength to have a long service life
- Low pressure drop ensures that high-velocity air moves through the pad with minimal resistance
- Self-cleaning design, thanks to the steeper angle of the unequal flute design, flushes dirt and debris from the pad's surface



NEW PRODUCT

ECOTIGHT TUNNEL DOOR



5' Tunnel Door

Part 31102W

Door Dimension: 39.3" x 60"

Door Thickness: 1- 3/8"

4' Tunnel Door

Part 31101W

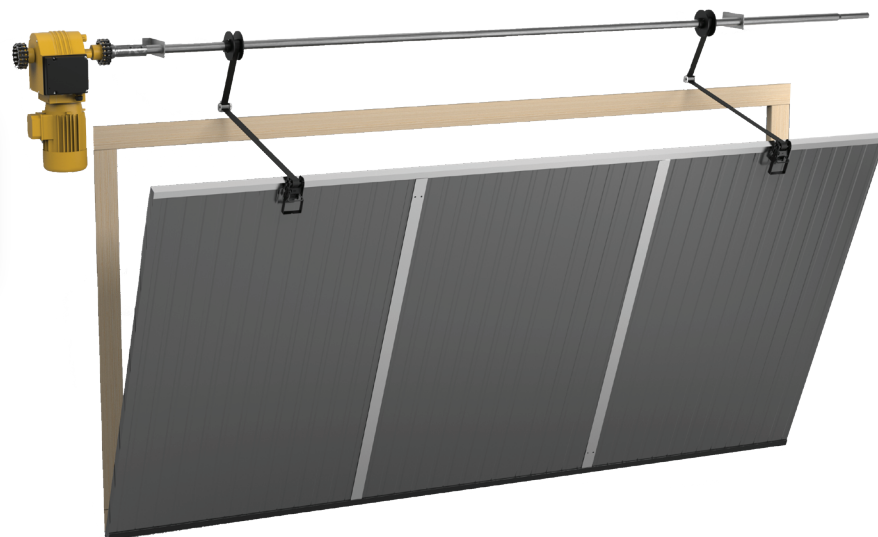
Door Dimension: 39.3" x 48"

Door Thickness: 1- 3/8"

- R-10 Insulation Value for increased energy efficiency and cost savings
- Easy and fast installation
- Custom Sizes Available
- Unique plastic design is more durable than metal
- Continuous hinge provides maximum sealing to reduce cold-air leakage
- Ratchet Strap design provides effortless tunnel door adjustments
- Easier to handle with its smaller door design

Now Available
Pipe Driven
EcoTight Tunnel Door

Pipe Drive Kit Part No 31104



NEW PRODUCT

CLEAR INLET

Eliminates the need to frame in separate windows by replacing older galvanized inlets with Clear Inlets.



Part 28100

- Transparent Design
- Allows natural light in, can be used as an alternative to a window to avoid having to frame in new windows.
- Available in a range of sizes to fit different facility needs.
- Constructed from high-quality, corrosion-resistant materials for long-lasting performance.
- Features a design that minimizes dirt accumulation and simplifies cleaning.
- Easily adapts to various facility layouts and needs, thanks to customizable sizes.
- Reduces the need for frequent replacements, saving time and money over the long term.

USES:

- Ideal for retrofitting older facilities without compromising structural integrity.
- Perfect for growers looking to improve ventilation and natural lighting without extensive renovations.



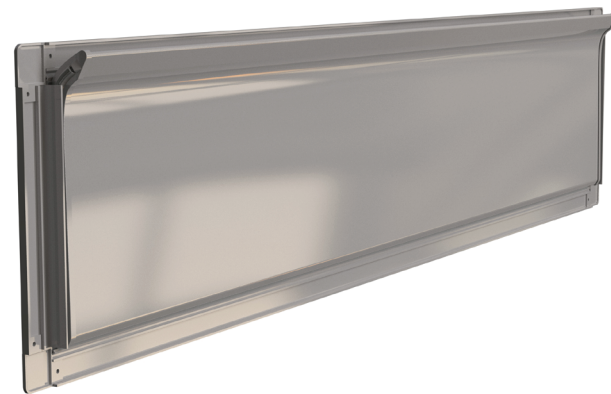
NEW
PRODUCT

GALVX INLET

Wall Inlet for Retrofit



Part 62000



GALVX FEATURES

- Plastic Frame
- European Curved Blade Design
- Brush Seal
- Fully Insulated Blade
- UV Protected
- Continuous Hinge
- Designed to cover 7"-9" tall openings and widths of 48" or smaller

GALVX BENEFITS

- Designed to fully seal against air leakage and light.
- Designed to direct fresh air along ceiling-to-ceiling peak for effective air mixing.
- Reduces drafts and saves on heating costs.
- Built to be rodent and beetle resistant.
- Improves wet litter by preventing air leakage and condensation build up.
- Will not require wind/sun deflector.
- Directs airflow through inlet's opening rather than leaking out bottom and sides of inlet.
- Versatile to cover multiple different opening sizes.
- Easy to install.



RETROAIRE FLUSH MOUNT INSULATED INLETS

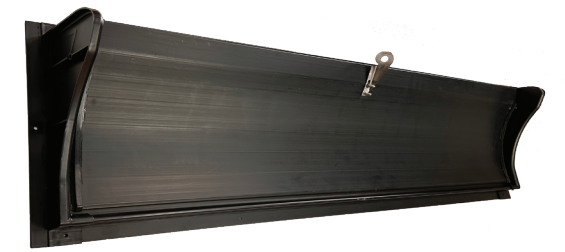
Designed to replace galvanized sidewall inlets



8" RetroAire

Part 90582

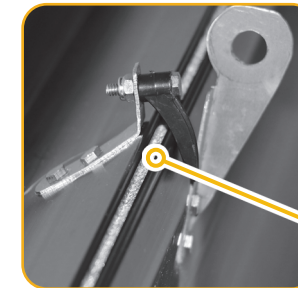
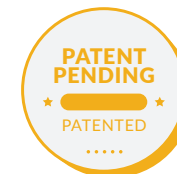
2,108 cfm @ 0.1 SP
BESS Labs Test #23408
Rough Opening: 44.5"L x 8"H
Dimensions: 46" x 10.75"



13" RetroAire

Part 90583

2,876 cfm @ 0.1 SP
BESS Labs Test #23405
Rough Opening: 41.5"L x 11.75"H
Dimensions: 43" x 14.5"



Brush seal provides protection against air and light leakages

- Designed with an aerodynamic, curved louver blade that directs fresh air along ceiling to ceiling peak for effective air mixing
- Great replacement for galvanized doors
- Built with fully insulated PVC that is rodent and beetle resistant
- Eliminates wet litter by preventing air leakage and condensation build up
- Delivers more air (cfm) than conventional metal inlets and reduces inlets needed
- Features a flush mount that is fully sealed against air leakage and light
- Directs airflow through inlet's opening rather than leaking out bottom and sides of inlet
- Engineered with continuous hinge that helps reduce drafts on birds and saves on heating costs; improves bird health



CUSTOM WALL INLETS

The perfect solution for your retro-fit project.



Custom 8" RetroAire

Part 90587

Inlet OD Width: RO Width +1.5"
Inlet OD Height: 10.75"

Custom 13" RetroAire

Part 90588

Inlet OD Width: RO Width +1.5"
Inlet OD Height: 14.50"
Bess Labs Test 23404
4474



Custom 8" CSW

Part 90577

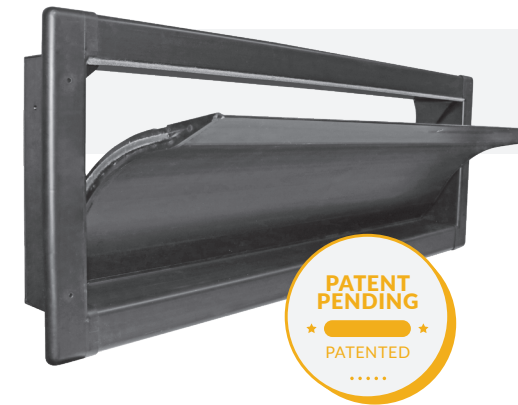
Inlet OD Width: RO Width +1.75"
Inlet OD Height: 11.25"

- Easy installation as custom sizes can be ordered to fit existing or new rough openings
- Constructed with flush mount framing to easily through opening
- Aerodynamic curved blade design allows for efficient air mixing
- Built in insulation and continuous hinge reduces condensation & freezing
- Plastic construction is beetle resistant
- Reduces bird drafting and wet litter



DELUXE DIRECTAIRE INSULATED INLETS

Fully insulated sidewall inlet that is rodent and beetle resistant – no exposed insulation



Deluxe DirectAire
4413

Part 90570CH

3,266 cfm @ 0.1 SP
BESS Labs Test #19260
Rough Opening: 44.5"L x 13.5"H
Inlet OD: 47.25" x 16.875"

Deluxe DirectAire
4113

Part 90572CH

3,050 cfm @ 0.1 SP
Rough Opening: 41.5"L x 13.5"H
Inlet OD: 44.50" x 16.875"

- Aerodynamic, curved louver blade and housing directs fresh air along ceiling to ceiling peak for effective air mixing in the center of housing
- Delivers more air (cfm) than conventional metal inlets and reduces inlets needed
- Easily snaps together for ease of installation and cheaper freight; easy to clean and adjust
- Reduces or eliminates bird drafting and saving on heating costs; improves bird performance
- Fully sealed against air leakage and light
- Designed with fully insulated PVC that is rodent and beetle resistant – no exposed insulation
- Directs airflow through inlet's opening rather than leaking out bottom and sides of inlet



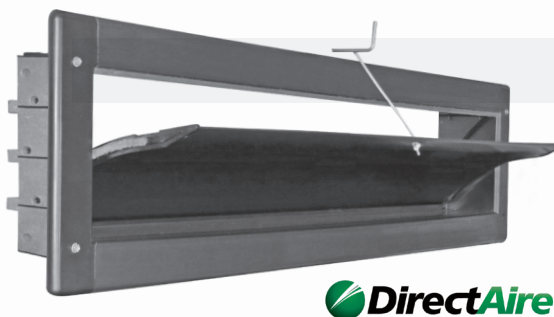
"Installed these inlets in my two 66' wide houses. Gives an excellent airflow pattern, and the new insulated design minimizes sweating and water buildup."

DO NOT STORE BOXES OR INLETS OUTSIDE OR IN DIRECT SUNLIGHT. IF INSTRUCTIONS ARE NOT FOLLOWED, WARRANTY WILL BE VOID.



DIRECTAIRE INSULATED INLETS

Aerodynamic, curved louver blade directs fresh air along ceiling for effective air mixing



DirectAire 4408

Part 90553CH

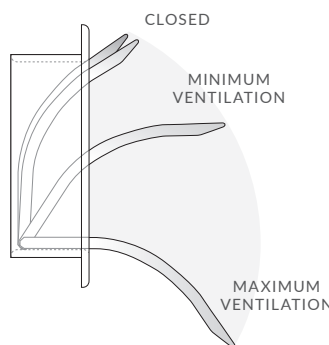
1,669 cfm @ 0.1 SP
 BESS Labs Test #14334
 Rough Opening: 44.5"L x 8.25"H
 Inlet OD: 48" x 11.25"

DirectAire 4108

Part 90557CH

1,555 cfm @ 0.1 SP
 Rough Opening: 41.5"L x 8.25"H
 Inlet OD: 44.25" x 11.25"

- Aerodynamic, curved louver blade directs fresh air along ceiling to ceiling peak for effective air mixing and speeds air to the center of even wider poultry mega houses
- Totally sealed PVC construction prevents darkling beetles from deteriorating inlet
- Delivers more air (cfm) than conventional metal inlets and reduces inlets needed
- During operation, airflow is directed through the inlet's opening rather than leaking out the bottom and sides of inlet
- Effectively pulls warm air from sidewalls 3 feet away and mixes warm air with fresh incoming air



DO NOT STORE BOXES OR INLETS OUTSIDE OR IN DIRECT SUNLIGHT. IF INSTRUCTIONS ARE NOT FOLLOWED, WARRANTY WILL BE VOID.



TOPJET WALL INLETS

Most efficient counterweight wall inlet on market with minimal expense - used worldwide



TJP 1255

Part 90740

Opens at 0.055 static pressure
 Rough Opening: 22" x 6.5"
 434 cfm @ 0.125 SP
 BESS Labs Test #23287

TJP 1265

Part 90741

Opens at 0.065 static pressure
 Rough Opening: 22" x 6.5"

- Designed with counterbalance louvers that opens from the top instead of the bottom, directing air to the center peak of poultry house with no open ends or bottom leakage.
- Counterbalance design can be made with the different weights to open at different static pressures of 0.55 and 0.65.
- Built with durable PVC construction for long life - no corrosion or deterioration.
- Eliminates curtain, baffle pulley and cable management required with traditional winter inlet systems.
- Use of wind deflector is suggested



EASILY SNAP TOGETHER TWO TJP1255 INLETS



Part 90715

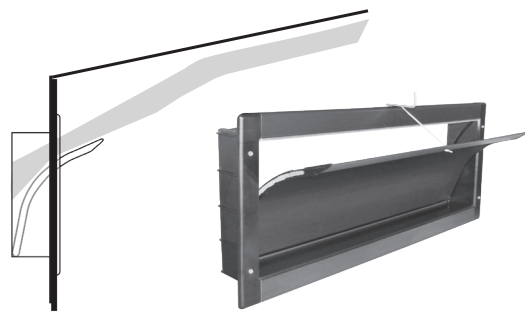
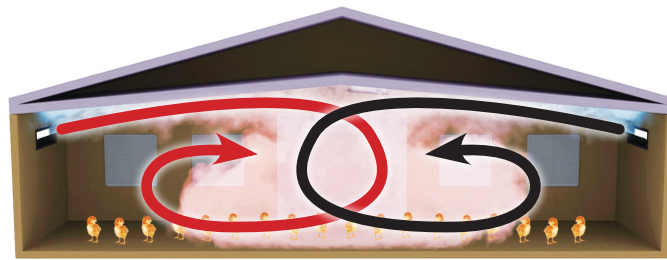
WD48 WIND DEFLECTOR
 For use with two TJP1255 Inlets



Why Recessed vs. Galvanized?

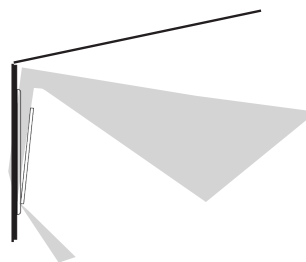
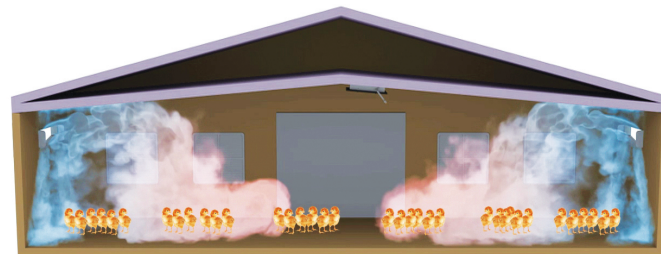
Some sidewall inlets are better at directing air across the ceiling than others

Recessed Wall Inlets Double L DirectAire Inlets



- A high quality inlet makes more sense since majority of the fresh air should enter through the inlets
- The inlet door is recessed into the wall, which prevents air from exiting the sides of the inlet
- Effectively pulls warm air from sidewalls 3 feet away and mixes warm air with fresh incoming air, directing mixed tempered air along ceiling to peak of house
- Can be used to increase air movement across floor
- Tend to be better insulated and constructed than traditional galvanized inlets

Galvanized (Surface Mount) Wall Inlets Competition Inlets



Instead of shooting the air to the center of the building, air hits the ceiling and bounces down to the floor - chilling the birds

- Leakage at the bottom of the flush mount sidewall inlet
- Sweating / inlet hinge rusting
- Side air leaks let cold air drop without mixing with the warm air in the house
- These weaknesses can prove costly, especially in modern totally enclosed houses



Air leakage also creates very cold side walls



DEFLECTORS FOR SIDEWALL INLETS

Proven to be the most efficient poultry hood on the market. Designed for minimal air restriction



Deluxe DirectAire

Part 90555C

4413 / 4113 Inlet Size
48"L x 18.75"H x 12"D



DirectAire

Part 90555WDC

4408 / 4108 Inlet Size
48"L x 13.25"H x 8"D

WARNING!



WIND DEFLECTOR NEEDS TO BE INSTALLED TO PROTECT INLETS FROM DIRECT SUNLIGHT

WARRANTY VOID IF WIND DEFLECTOR IS NOT USED ON DIRECTAIRE INLETS

- Plastic Construction for Durability
- Restricts Rain, Wind & Sun Access
- UV protected from sun rays and will not brittle over time
- Designed for minimal air restriction and only restricts the air 13.03% when the inlet is fully open (BESS Labs Test No. 17551)
- Brings in more air at a higher velocity than wood alternative
- Leads to drier litter moisture content over an extended period of time.
- Light Reflection is reduced by texturing on the hood

"I love this new hood design! It protects my inlets from the sun and the wind, and I've found my sidewall inlets operate more efficiently than my other houses with the wood and tin design."





CEILING SIDEWALL INSULATED INLETS

Insulated, aerodynamic, curved louver blade directs fresh air along the ceiling to ceiling peak for maximum air mixing



CSW4612

Part 90560

2,413 cfm @ 0.1 SP
BESS Labs Test #19259
Rough Opening: 46.5" x 12.5"
Inlet OD: 48" x 14.875"



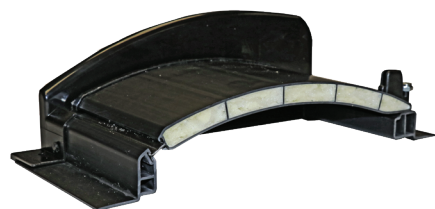
CSW4612 cutaway with insulated foam filled blade and housing



CSW4608

Part 90569

2,549 cfm @ 0.1 SP
BESS Labs Test #19258
Rough Opening: 46.5" x 8.5"
Inlet OD: 49.5625" x 11.1875"



CSW4608 cutaway with insulated foam filled blade

- Aerodynamic, curved louver blade directs fresh air along ceiling to ceiling peak for effective air mixing
- Proven tight seal and design minimizes air leakage resulting in reduced fuel usage
- Fully insulated blade and housing help increase insulation value
- Minimal sweating occurs on inlet in cold climates with full insulation
- All PVC construction that is resistant to corrosion and infestations



360° INSULATED INLETS

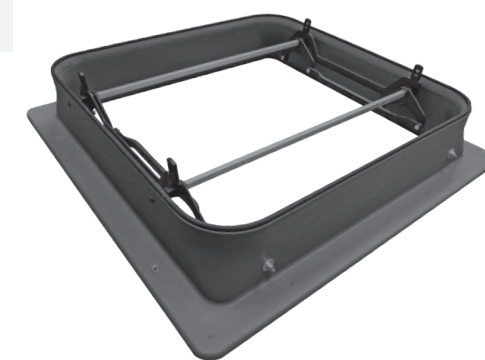
360° airflow heavy-duty radius corner design increases fuel savings, air distribution, and air mixing



GC1140 (Gravity)

Part 90678
1,659 cfm @ 0.10 SP
BESS Labs Test #14005

Rough Opening: 23.75" x 23.75"
Inlet OD: 27.25" x 27.25"



RADIUS CORNERS FOR 360° AIRFLOW WITH NO DEAD SPOTS
Air doesn't hit square corners and deflect back into inlet



AC3010 (Actuated)

Part 90671
2,050 cfm @ 0.10 SP
BESS Labs Test #14006

Rough Opening: 23.75" x 23.75"
Inlet OD: 27.25" x 27.25"

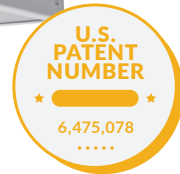
- 360° airflow heavy-duty radius corner design increases fuel savings, air distribution, and air mixing
- Designed for cold climates - fully insulated housing helps reduce heat loss and freeze-up
- Tightest seal on the market - minimal leakage when attic inlet is in the closed position
- Larger bottom board than competition helps direct air along ceiling, resulting in minimal downdraft
- Easy to remove and reattach bottom lid with attachable straps - no bolts or screws to take off
- Housing made of four point pivot reactive injection molding (RIM)





TJ4200 TOPJET CEILING AIR INLET

Engineered to allow higher static pressure in rooms

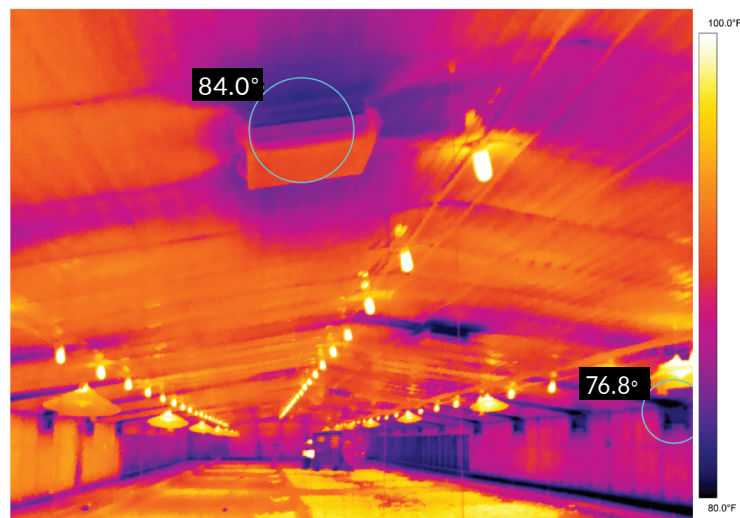


TJ4200

Part 90640

1,591 cfm @ 0.10 SP
 BESS Labs Test #02118
 Rough Opening: 22.5" x 22.5"
 Gravity Inlet Only

- 4-Directional louvers direct air along the ceiling and hold air up longer while mixing with room air, distributing air evenly
- Adjustable static pressure by adding washers to each rod
- Minimizes drafty conditions and chilling during brooding
- Engineered to allow more CFM through inlet
- Operates at a higher static pressure
- Creates more uniform house temperatures during minimum ventilation
- Ensures drier litter, lower fuel costs, and lower ammonia concentrations
- Easily assemble with no tools required



WHY USE CEILING INLETS?

Benefits of Ceiling Inlets

- Can be used as a tool to promote drier litter and reduce humidity inside the house by promoting higher ventilation rates without increased fuel usage
- The GC1140 has a fully insulated housing that uses tempered attic air, reducing likelihood of inlets freezing up and condensation
 - During most frigid, cold days of year it is very beneficial to bring tempered attic air into the house that is preheated and has a chance to mix with hot air at the peak of the house minimizing the use of sidewall inlets during cold weather
- Provide optimal air distribution and mixing
 - Bringing air through attic will blend with the hot air near the peak, and will push warm, fresh air down to bird level providing optimal mixing of the air

No ceiling Inlets Used

- When only sidewall inlets are utilized, there are increased instances of freezing / sticking open during cold weather
- Excess condensation on sidewall inlets that is absorbed into the litter
- Bringing in cold air from the sidewall inlets exclusively can result in increased fuel usage
- These weaknesses can prove costly, especially in modern houses



3D Rendering of attic inlet airflow in a poultry house

Attic Air Inlets Beneficial Year Round in Poultry House

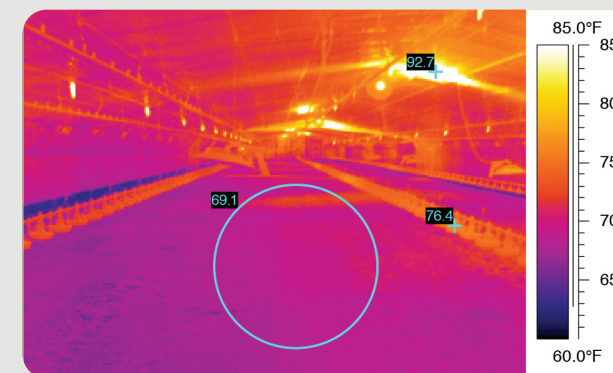


Photo 1 is taken in a 50' x 500' house during springtime when the outside temperature was in the low 60s and with a few inches of fresh, damp shavings. The 93 degree F air coming in through the house's attic inlets raised the house temperature to the mid seventies and the floor temperature to nearly 70 degrees F after only a couple hours of operation. When compared to a house ventilating through side wall inlets, the floor temperatures remained in the low sixties, resulting in little litter drying.

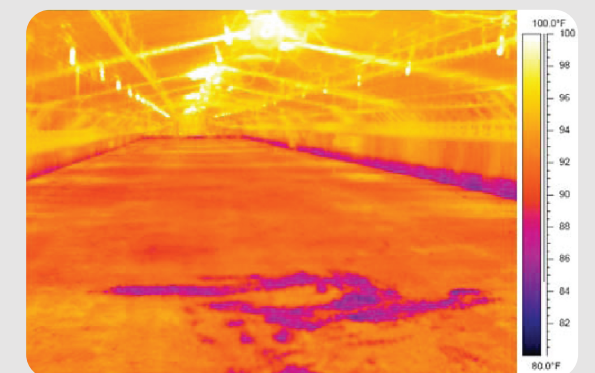
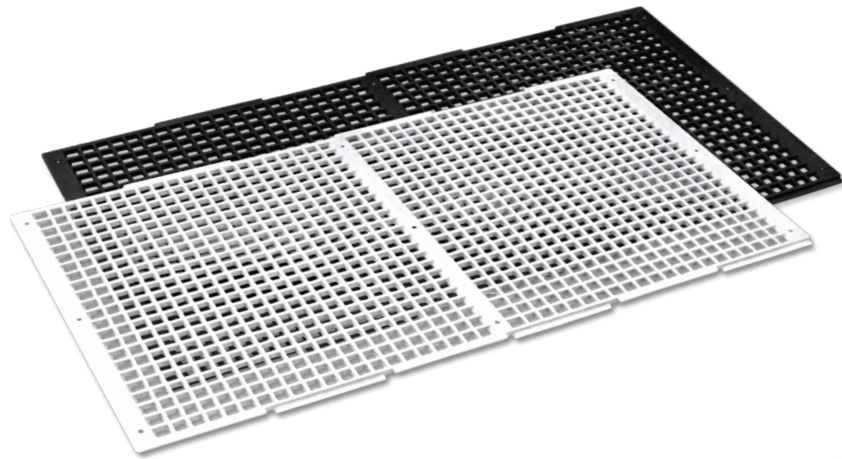


Photo 2 is taken in a 40' x 500' house on a typical summer day with outside temperatures in the mid eighties and with a few inches of fresh, damp shavings. In just a few hours the attic inlets increased the house temperature into the mid-nineties and the floor temperature to about 90 degrees F. The top surface of the fresh litter was beginning to dry. When compared to side wall ventilating, the cool damp litter remained below the surface.



RED ROOSTER FLOORING

Available as overlapping or non-overlapping floors and great for birds of all sizes.

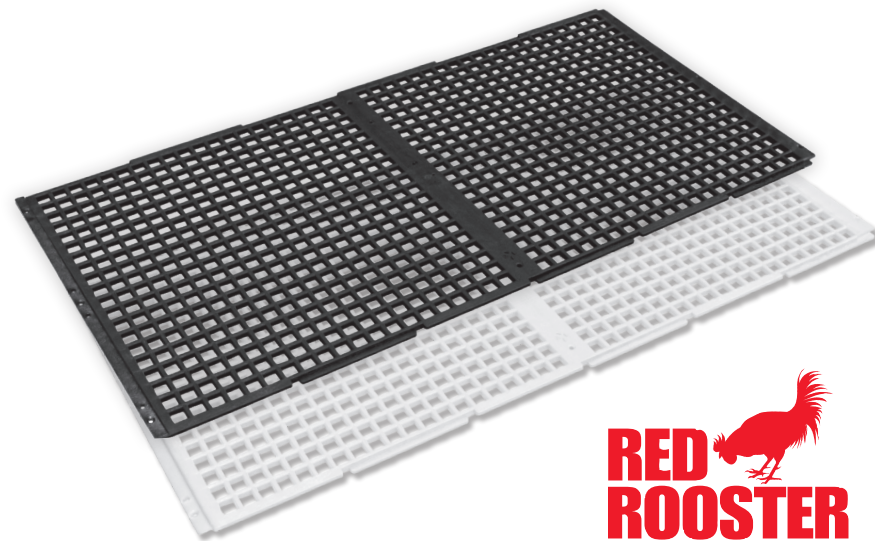


Non-Overlapping

Dimensions: 24.4" x 48" x 0.5"
Thickness: 0.5"
Hole Openings: 13/16" x 13/16"

Part 13504F
White Floor

Part 13507F
Black Floor



Overlapping

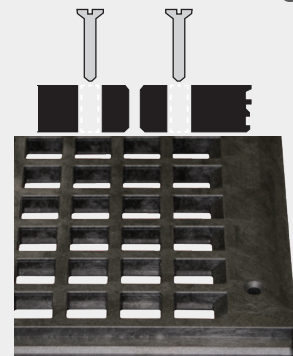
Dimensions: 23.9" x 48.6" x 0.5"
Thickness: 0.5"
Hole Openings: 3/4" x 3/4"

Part 13502
White Floor

Part 13501
Black Floor

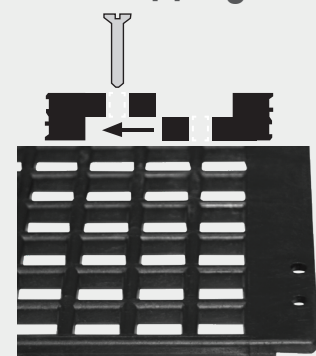


Non-Overlapping



3/4" x 3/4"
Square Hole Openings

Overlapping



13/16" x 13/16"
Square Hole Openings



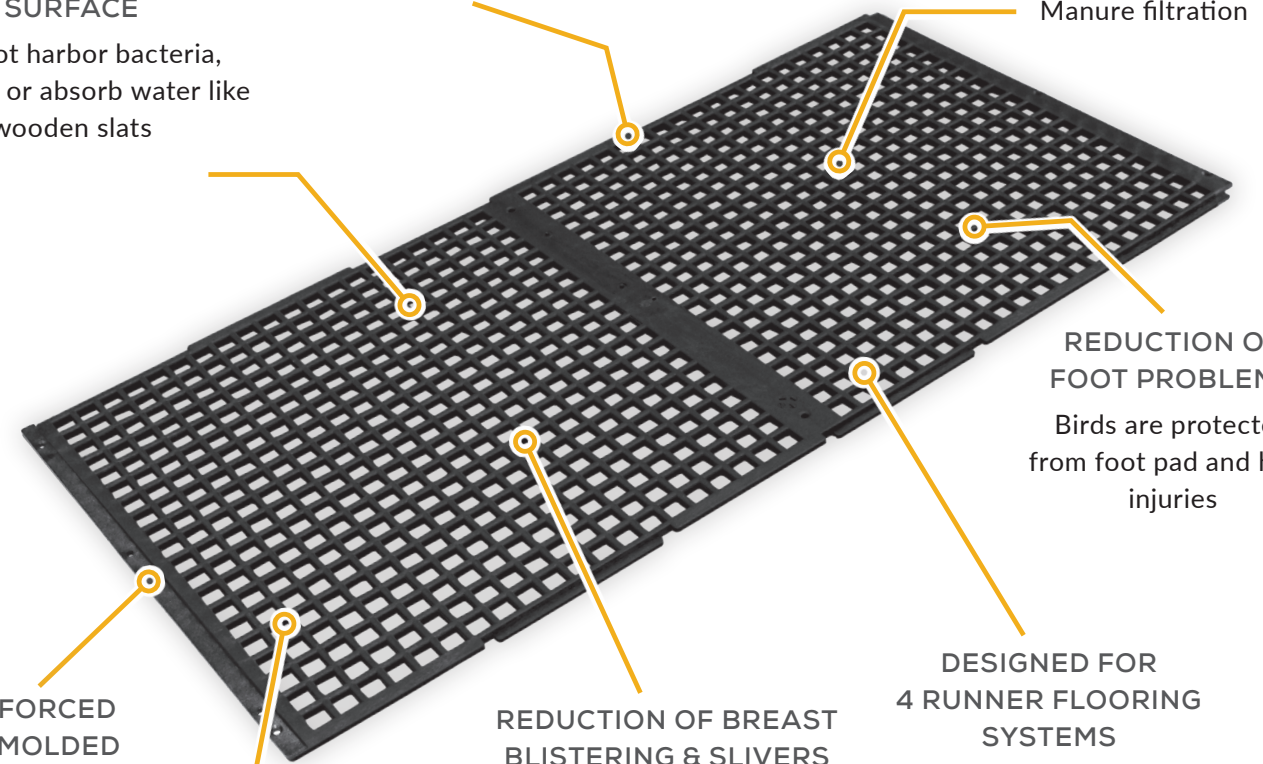
RED ROOSTER FLOORING FEATURES

NON-CORROSIVE AND NON-POROUS HIGH QUALITY POLYPROPYLENE SURFACE

Will not harbor bacteria, rot, rust, or absorb water like wooden slats

0.5 THICKNESS

EASY TO POWER WASH CLEAN
Approx. 55% Manure filtration



REINFORCED PRE-MOLDED SCREW HOLES
For fast assembly

REDUCTION OF BREAST BLISTERING & SLIVERS
No reports of breast blistering on red rooster floor ... And no chance of wooden slivers ever

DESIGNED FOR 4 RUNNER FLOORING SYSTEMS

REDUCTION OF FOOT PROBLEMS
Birds are protected from foot pad and hock injuries

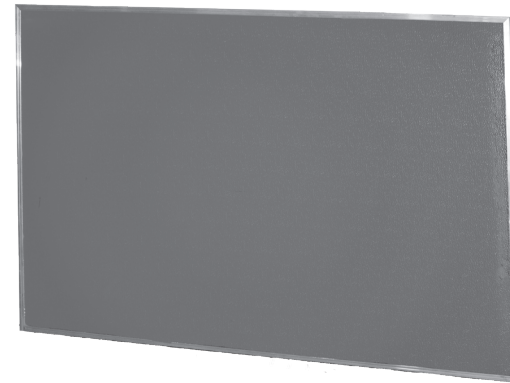
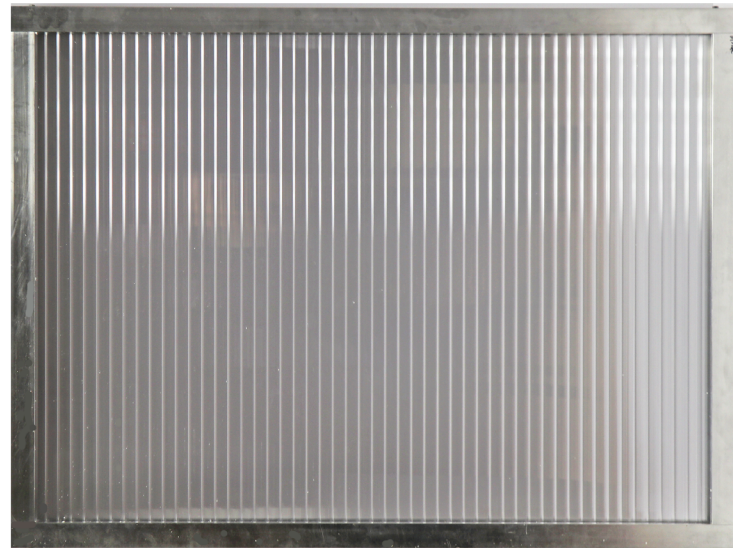
CAN BE CUT TO SPECIFIC SIZES

- 50% open area permits excellent manure filtration with minimum build-up for a clean, sanitary environment.
- Easily installed on 2" x 4" or 2" x 6" wooden supports - flooring can be cut to specific sizes.
- Smooth, non-porous surface is easy to clean and disinfect by carrying 4' sections out of the house for easy cleaning with pressure washer without having to disassemble flooring.
- Used with success under birds of all sizes - from little chick to large chicken and is a stable structure for walking with minimal sag.
- Does not deteriorate or need to be replaced after every flock of birds like wooden slats.
- Neutral polypropylene does not absorb body heat from birds and improves production rates



WINDOW AND COVER

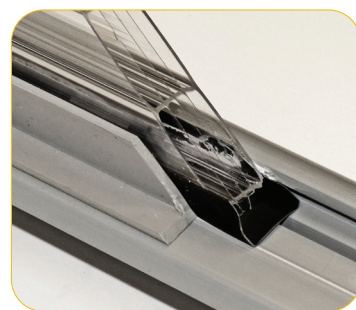
Improves house tightness and decreases air or water leakage



COVER



- Heavy-duty multi-walled construction of the panels offers high thermal resistance, giving excellent thermal insulating values
- Perimeter gasket system to ensure a good seal between glass and outer frame to improve house tightness and decrease air and/or water leakage
- Customizable to fit your operation or projects needs
- Designed for expansion and contraction



Black rubber gasket to seal the glass



Rubber seal to block light when cover is closed



SINGLE STAGE THERMOSTAT

Designed to provide precise control of heating, cooling, and ventilation systems



TH415

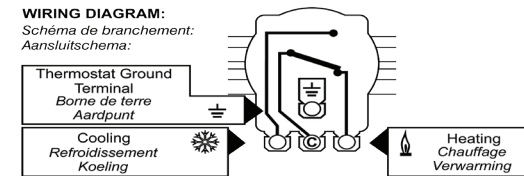
Part 50165

Temperature Range: 40° to 104° F (4° to 40° C)

- Designed to tolerate harsh environments, high humidity levels, and the most corrosive conditions; fast responding SS sensor
- Water-resistant NEMA 4x enclosure resists moisture and gases found in corrosive ag buildings as well as airborne contaminants

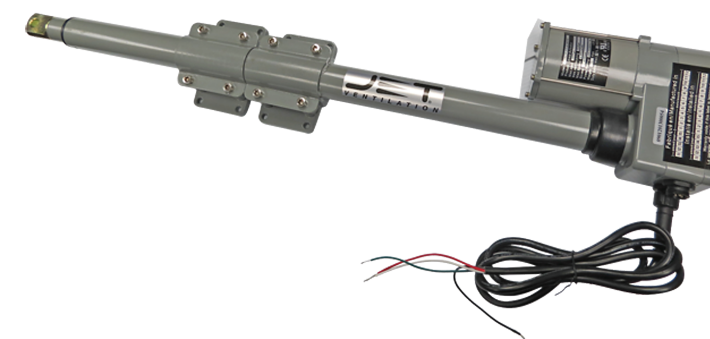
Volts A.C. 50/60 HZ	120V	240V
Full Load (inductive)	12A	10A
Lock Rotor Amps	48A	36A
Full Load Amps (resistive)	16A	16A
VA Pilot Duty (VA/Watts)	125	125

Adjustable knob allows for easy recalibration



24" STROKE LINEAR ACTUATOR

With adjustable mounting bracket

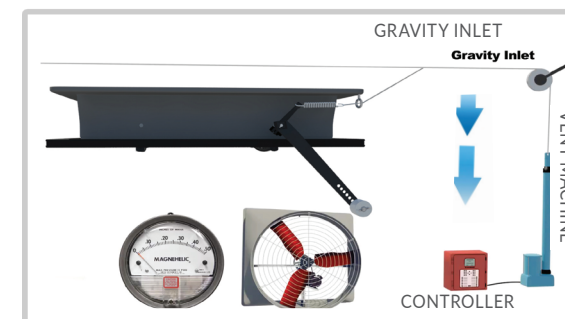


HA24-24"

Part 90880

Power Rating: 110V 50/60hz 1.0 Amps
Stroke: 24" / 610 mm
Max Speed: 5.3 mm / sec
Max Self-Locking: Approx. 772 lbs / 350 kg
Max Load: Approx. 772 lbs / 350 kg

WORKS GREAT WITH GC1140 ATTIC INLETS



- High limit safety switch
- Smooth, quiet operation
- Mounting hardware included
- Great for even harsh environments
- Totally enclosed - protected from oxidation
- Duty Cycle: Max 20%, 12 min / hr
- Heavy-duty high precision sealed 10 km feedback potentiometer





DOUBLE L

GROUP LLC

LAYER DIVISION

- Attic, Wall and Ceiling Inlets
- Hoods / Wind Deflectors
- PVC Shutters
- 1/5 HP Stir Fans
- Thermostats
- Winches
- Cool Cell System
- Rack & Pinion Systems
- Pop Out Doors

SWINE DIVISION

- Attic and Wall Inlets
- Ductwork
- PVC Shutters
- Flooring
- Pig Mat
- Curtain Pockets
- Thermostats
- Accessories
- Winches

BROILER DIVISION

- Wall and Ceiling Inlets
- Tunnel Doors
- Hoods/Wind Deflectors
- Cool Cell System
- 1/5 HP Stir Fans
- Linear Actuator
- Thermostats
- Flooring
- Winches

DAIRY DIVISION

- Fans
- Evaporative Cooling
- Tunnel Doors
- Rack & Pinion
- Attic and Wall Inlets
- PVC Shutters
- Curtain Pockets
- Accessories
- Winches

Since 1973, Double L has committed to providing high-quality products and services worldwide that are based on value, customer's needs, and excellent sales support.

Double L Group, LLC strives to provide our distributors and customers with innovative products that offer the best return on investment.

CONTACT DOUBLE L FOR:

- High Quality Materials and Products
- Quality Design for Compact Shipping
- BESS Lab Testing of Ventilation Products
- Exceptional Service on all Products
- Informative Website with Informational Product Videos

2020 Beltline Road | PO Box 324 | Dyersville, Iowa 52040-0324
800-553-4102 | 563-875-6257 | sales@doublel.com | www.doublel.com



Disclaimer of warranties and limitation of remedies: the manufacturer of these products provides a limited warranty and Double L Group LLC will provide further information relating to the manufacturer's warranty upon request. Subject to that manufacturer warranty, for which the manufacturer and not Double L Group LLC is solely liable, these products are offered by Double L Group LLC as is, with all faults and without any representations by Double L Group LLC as to quality, performance or suitability. Double L Group LLC specifically disclaims any and all warranties, express or implied, including without limitation all warranties of merchantability or fitness for a particular purpose. Under no circumstances shall Double L Group LLC or any of its employees, directors, officers or agents be liable, in tort, contract or otherwise, for any direct or indirect losses or damages in any way arising from or related to any product purchased, including without limitation the condition or performance of the product, whether such damages are general, special, consequential, incidental, economic, exemplary or otherwise. This includes but is not limited to damage or injuries to person, property, or animals, business interruption or other economic loss. This disclaimer of liability shall apply even if an authorized representative of Double L Group LLC has been advised of or should have known of the possibilities of such damages.